

$$43) (f \circ g)(x) = 2 - (\sqrt{x+2})^2 = -x$$

$$D: x \geq -2$$

$$R: y \leq 2$$

$$(g \circ f)(x)$$

$$\sqrt{2-x^2+2} = \sqrt{4-x^2}$$

$$D: -2 \leq x \leq 2$$

$$R: 0 \leq y \leq 2$$

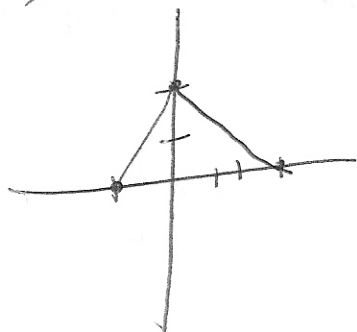
$$66) a) y = 20.627x + 377.995$$

b) 957.45 degrees

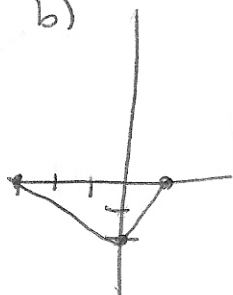
c) 20.627

The slope is the ~~amount~~ <sup>amount</sup> of doctorates earned by Hispanics each year starting in 1976-1977.

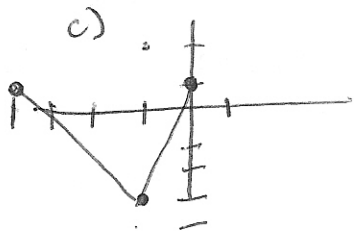
60) a)



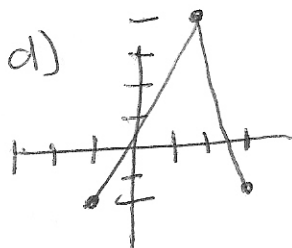
b)



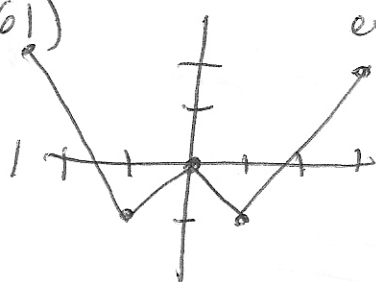
c)



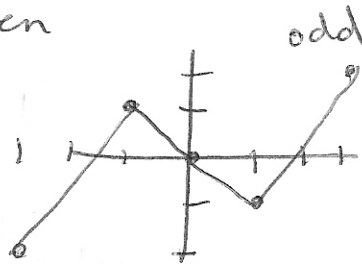
d)



61)



even



odd